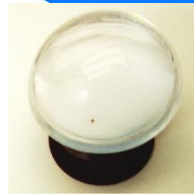


Ammonia Filter End-of-Service Life Indicator (ESLI) (PN: 2511-2000)

Specifications



Filter is good



Replace filter



1. Application

The Ammonia ESLI (PN: 2511-2000) is qualitative (yes/no) colorimetric indicator for the end-of-service life of filters. The indicator is designed to provide real-time indication of the end-of-service life of ammonia filters.

2. Specifications

- a. Weight: 5g (0.18oz)
- b. Dimensions: 21.6mm (0.85in), ϕ : 25.0mm (1.0in)
- c. Threading: 0.75"-20 UNEF-2A male *
- d. Operating temperature: -20°C to 55°C (-4°F to 131°F)
- e. Operating humidity: 5% RH to 85%RH
- f. Minimum detectable limit: 10ppm-hr at 30 cm/sec face velocity
- g. Color change: Light blue to blue or purple
- h. Storage temperature: 4°C to 25°C, (39°F to 77°F)
- i. Shelf life: 2 years at 4°C to 25°C, (39°F to 77°F)
- j. Service life: 2 years

* UNEF = Unified National Imperial Screw Thread

Cross interferences and limitations: None known.

3. Operating Instructions

- a. Ensure that packaging pouch is intact.
- b. Open packaging pouch by tearing off the top part from one of side notches
- c. Remove ESLI from the packaging pouch.
- d. Remove activation plug (Figure 1).



- e. Hold the ESLI from the edges, as shown in Figure 2, and insert it into the ESLI housing (Figure 2).
- f. Screw the ESLI into the ESLI housing as shown in Figure 3.
- g. Replace or refill filter when the ESLI changes color to blue or purple.



Figure 1

Figure 2

Figure 3